

Career Pathways to Care

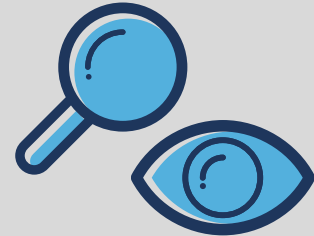
Connecting people to qualifications and on the job experience to enter the aged care and disability sector.

For Organisations

Screening

Our partners look for natural carers in the community who hold a Certificate III or less, and are Australian residents.

STEP
01



Staff Allocation

Conducted by Vative Healthcare in consultation with you, the employer. Suitable trainee is presented to employer for final decision.

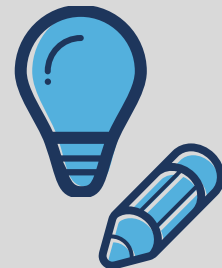


STEP
02

Sign Up

Trainee is signed up to traineeship through our partners, enrolled in Certificate IV in Ageing Support and Disability through VHC, and commence employment.

STEP
03



Initial Training

Four days initial training to introduce the basics of providing care.



STEP
04

Training While Working

12 months accredited training and paid on-the-job experience.

STEP
05

vativehealthcare.com.au
TOID 22175
For further information,
call 0428 003 748